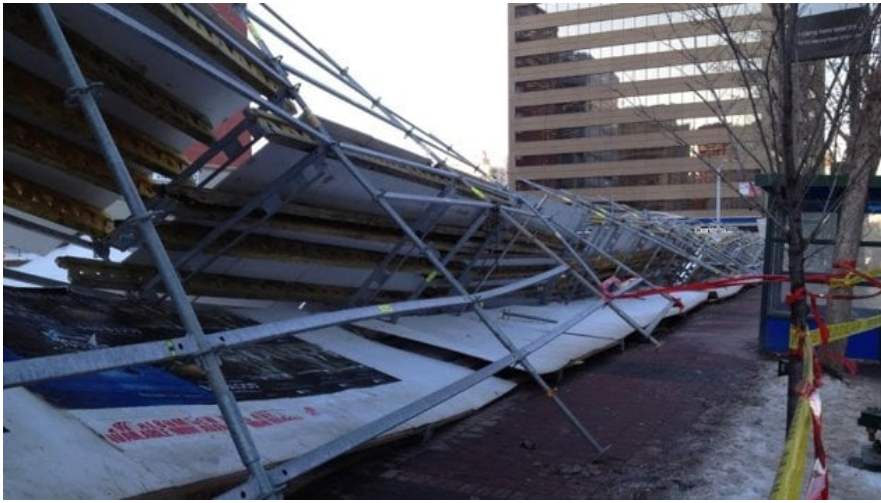


Picture This! I'll Huff and I'll Puff and I'll...



Wind gusts exceeding 120 kilometers (75 miles) per hour sent scaffolding crashing down at a construction site in Edmonton, AB. Fortunately, no workers or members of the public were injured. High winds can make conditions hazardous for construction workers, and in the case of building materials being thrown, can also endanger the public. (CBC News)